

Quantum GIS User Guide

Version 0.6 '*Simon*'

Gary E. Sherman
Tim Sutton
Radim Blazek (GRASS)

December 16, 2004

Contents

1	Introduction	2
2	Whats New in 0.6	3
3	Major Features	3
4	Getting Started	4
4.1	Installation	4
4.2	Sample Data	4
4.3	Starting QGIS	4
4.4	The QGIS Main Window	4
4.4.1	The QGIS menu bar	5
4.4.2	Toolbars	6
4.4.3	The QGIS map legend	6
4.4.4	The QGIS map view	6
4.4.5	The QGIS map overview	6
4.4.6	The QGIS map status bar	6
5	Working with Vector Data	6
5.1	Shapefiles	7
5.1.1	Loading a Shapefile	7
5.2	PostGIS Layers	8
5.2.1	Creating a Stored Connection	8
5.2.2	Loading a PostGIS Layer	9
5.2.3	Importing Data into PostgreSQL	9
5.3	The Vector Properties Dialog	10
5.3.1	Vector Symbology	10
6	Working with Raster Data	12
6.1	What is raster data?	12
6.2	Raster formats supported in QGIS	12
6.3	Loading raster data in QGIS	12
6.4	Raster Properties	12
6.4.1	Symbology Tab	13
6.4.2	General Tab	14
6.4.3	Metadata Tab	14
6.4.4	Pyramids Tab	14

7 GRASS	15
7.1 Starting QGIS with GRASS	15
7.1.1 From GRASS shell	15
7.1.2 Outside GRASS shell	15
7.2 Loading GRASS Data	15
7.3 Vector Data Model	16
7.4 Digitizing and Editing Tools	16
7.4.1 Toolbar	17
7.4.2 Category Tab	17
7.4.3 Settings Tab	18
7.4.4 Symbology Tab	18
7.4.5 Table	18
7.4.6 Region Tool	18
8 Using Plugins	18
8.1 Finding and Installing a Plugin	19
8.2 Managing Plugins	19
8.3 Data Providers	20
8.4 Core Plugins	20
A Supported OGR Formats	21
B GDAL Raster Formats	21
C Gnu Public License	22
D Quantum GIS Qt exception for GPL	26

QGIS Tips

1 USING COMMAND LINE ARGUMENTS	4
2 VIEWING THE LAYER MENU	6
3 ZOOMING THE MAP WITH THE MOUSE WHEEL	6
4 LAYER COLORS	7
5 QGIS USER SETTINGS AND SECURITY	9
6 USING A DEFINITION QUERY WITH POSTGIS LAYERS	9
7 IMPORTING SHAPEFILES CONTAINING POSTGRESQL RESERVED WORDS	10
8 GATHERING RASTER STATISTICS	14
9 GRASS DATA LOADING	16
10 LEARNING THE GRASS VECTOR MODEL	16
11 GRASS EDIT PERMISSIONS	18
12 CRASHING PLUGINS	20

1 Introduction

Quantum GIS (QGIS) is designed to be a Geographic Information System (GIS) built for Linux/Unix, Mac OSX, and Windows. QGIS currently offers basic support for vector (both disk-based and database) and raster formats.

QGIS is released under the GNU Public License. You should have received a full copy of the license with your copy of QGIS.

Note - The latest version of this document can always be found at <http://qgis.sourceforge.net/docs/userguide.html>

2 Whats New in 0.6

New features in version 0.6 include:

1. GEOS support in the OGR provider to refine selection of features via identify. This improves over the previous method of feature selection which used a simple MBR intersection check.
2. PostGIS editing support in provider
3. Vector dialog redesign to improve usability
4. Improvement in project handling (loading and saving)
5. Scale dependent rendering
6. User option to load layers with out drawing them, thus allowing you to set scale dependency, etc without waiting for the initial draw to complete
7. Interrupt drawing of features by hitting ESC
8. Attribute actions - the ability to run an external program based on the contents of an attribute field in a layer
9. Create new vector layer (shapefile) for editing
10. Windows installer Mac OSX binary
11. New options in the graticule builder plugin
12. Enhancements to the GPS plugin
13. Man page
14. Save delimited text as shapefile
15. Improved Delimited Text plugin, including preview of text file
16. Improved SPIT handling of PostgreSQL reserved words and shapefiles with multiple geometry types
17. Display SQL query used to create a PostGIS layer
18. PostgreSQL query builder
19. Ability to redefine the query used for PostgreSQL layers from the layer properties dialog
20. North arrow, scalebar, and copyright plugins save their state in the project file
21. Datasets with UTF8, Kanjii and CJK filenames now load properly

3 Major Features

QGIS has many common GIS features and functions. The major features are listed below.

1. Support for spatially enabled PostgreSQL tables using PostGIS
2. Support for ESRI shapefiles and other vector formats support by the OGR library, including MapInfo files
3. Identify features
4. Display attribute table
5. Select features
6. Label features
7. Persistent selections
8. Save and restore projects

9. Support for raster formats supported by the GDAL library
10. Change vector symbology (single, graduated, unique value, and continuous)
11. SVG markers symbology (single, unique value, and graduated)
12. Display raster data such as digital elevation models, aerial photography or landsat imagery
13. Change raster symbology (grayscale, pseudocolor and multiband RGB)
14. Export to Mapserver map file
15. Preliminary digitizing support
16. Map overview
17. Plugins

4 Getting Started

This section gives you a quick overview of running QGIS and examining data available on the QGIS web page.

4.1 Installation

Installation of QGIS is documented in the Installation Guide. The Installation Guide is distributed with the QGIS source code and is also available at <http://qgis.org>.

4.2 Sample Data

If you do not have any GIS data handy, you can obtain a dataset for Alaska from the QGIS web site at <http://qgis.org>. The Alaska data set will be used as the basis for the examples and screenshots provided in this document.

4.3 Starting QGIS

Assuming that QGIS is installed in the PATH, you can start QGIS by typing: **qgis** at a command prompt or by double clicking on the QGIS application link (or shortcut) on the desktop.

Tip 1 USING COMMAND LINE ARGUMENTS

You can also start QGIS by specifying one or more datafiles on the command line. For example, assuming you are in your data directory, you could start QGIS with two shapefiles and a raster file set to load on startup using the following command: `qgis ak_shade.tif alaska.shp majrivers.shp`

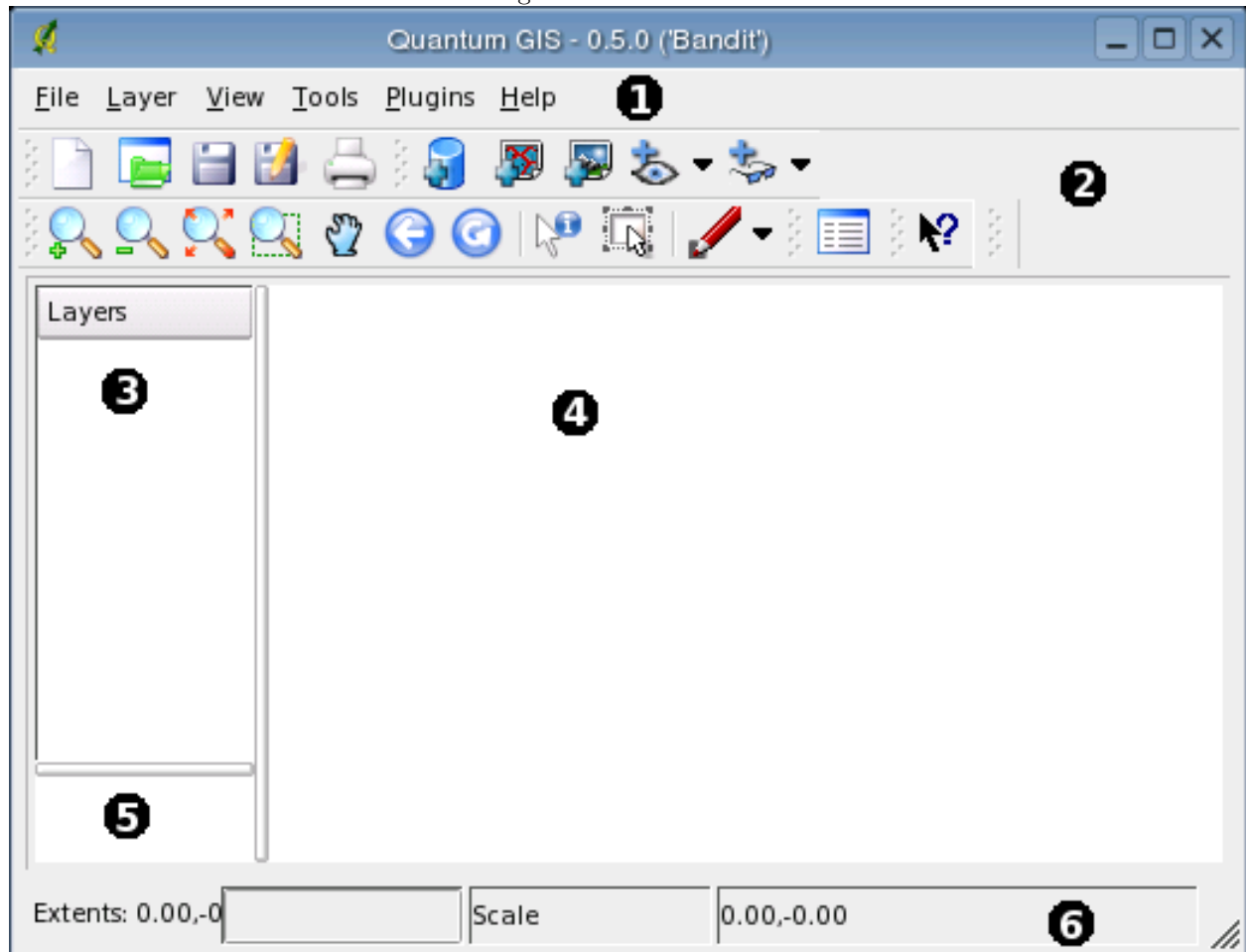
4.4 The QGIS Main Window

When QGIS starts, an empty window is displayed as shown below.

textscNote - Your window decorations (title bar, etc.) may appear different depending on your operating system and window manager The QGIS main window is divided into five areas:

1. The menu bar
2. The tool bar
3. The map legend
4. The map view

Figure 1: Main window



5. The map overview

6. The status bar

These six components of the QGIS interface are described in more detail in the following sections

4.4.1 The QGIS menu bar

The menu bar provides access to various QGIS features using a standard windows heirarchical menu. The top-level menus and a summary of some of the functions provided are:

- File (project open, save, export image, properties)
- Layer (add, show, hide layers)
- View (zoom, refresh)
- Tools (plugin manager, preferences)
- Plugins (menus added by plugins as they are loaded)
- Help (documentation and web links)

4.4.2 Toolbars

The toolbars provide access to most of the same functions as the menus, plus additional tools for interacting with the map. Each toolbar item has popup help available. Hold your mouse over the item and a short description of the tool's purpose will be displayed.

4.4.3 The QGIS map legend

The map legend area is used to set the visibility and z-ordering of layers. Z-ordering means that layers listed nearer the top of the legend are drawn over layers listed lower down in the legend. The checkbox in each legend entry can be used to show/hide that layer.

Tip 2 VIEWING THE LAYER MENU

You can display the context menu for any layer in the legend by right-clicking on the layer name. The context menu contains items for working with the layer and viewing its properties.

4.4.4 The QGIS map view

This is the 'business end' of QGIS - maps are displayed in this area! The map displayed in this window will depend on the vector and raster layers you have chosen to load (see sections that follow for more info on this). The map view can be panned (shifting to focus of the map display to another region), zoomed in and out, and supports various other actions as described in the toolbar description above. The map view and the legend are tightly bound to each other - the maps in view reflect changes you make in the legend area.

Tip 3 ZOOMING THE MAP WITH THE MOUSE WHEEL

You can use the mouse wheel to zoom in and out on the map. Place the mouse cursor inside the map area and roll it forward (away from you) to zoom in and backwards (towards you) to zoom out.

4.4.5 The QGIS map overview

The map overview area provides a full extent view of layers added to it. Within the view is a rectangle showing the current map extent. This allows you to quickly determine which area of the map you are currently viewing.

4.4.6 The QGIS map status bar

The status bar shows you your current position in map coordinate (e.g. meters or decimal degrees) as the mouse pointer is moved across the map view.

5 Working with Vector Data

QGIS supports vector data in a number of formats, including shapefiles, MapInfo mif, and PostGIS layers in a PostgreSQL database. Support for additional data types is provided by plugins, for example delimited text.

This section describes how to work with two common formats: shapefiles and PostGIS layers. Many of the features available in QGIS work the same regardless of the vector data source. This is by design and includes the identify, select, labeling, and attributes functions.

5.1 Shapefiles

Shapefile support is provided by a library of functions (OGR <http://www.remotesensing.org/gdal/ogr>). See Appendix A for a list of supported formats.

A shapefile actually consists of a minimum of three files:

1. .shp file containing the feature geometries
2. .dbf file containing the attributes in dBase format
3. .shx index file

The technical specification for the shapefile format can be found at <http://www.esri.com/software/opengis/openpdf.html>.

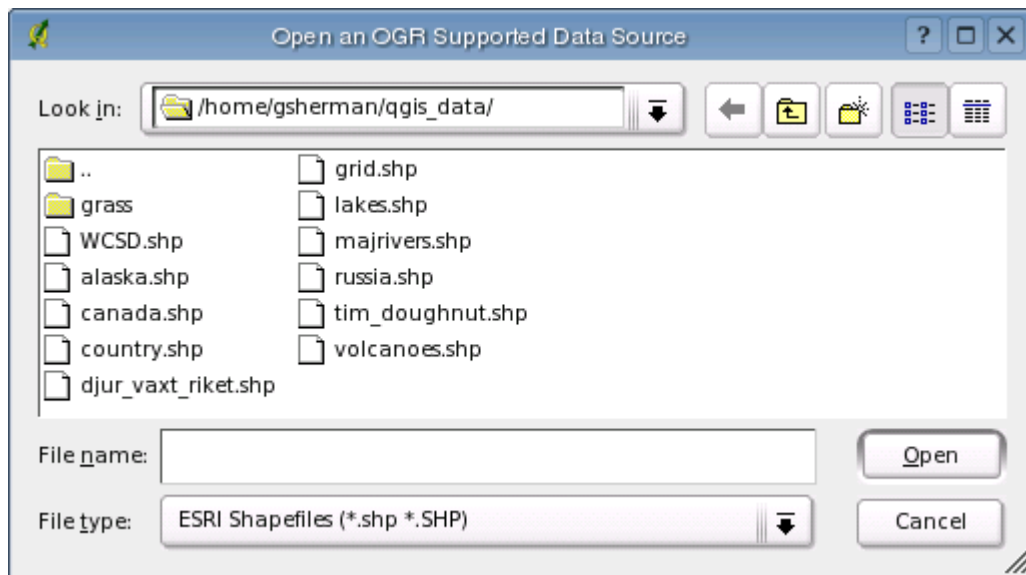
5.1.1 Loading a Shapefile



To load a shapefile, start QGIS and click on the *Add a vector layer* toolbar button. This same tool can be used to load any of the formats supported by the OGR library.

Clicking on the tool brings up a standard open file dialog (Figure 2) which allows you to navigate the file system and load a shapefile (or other supported data source). Selecting a shapefile from the list and clicking

Figure 2: Open OGR Data Source Dialog



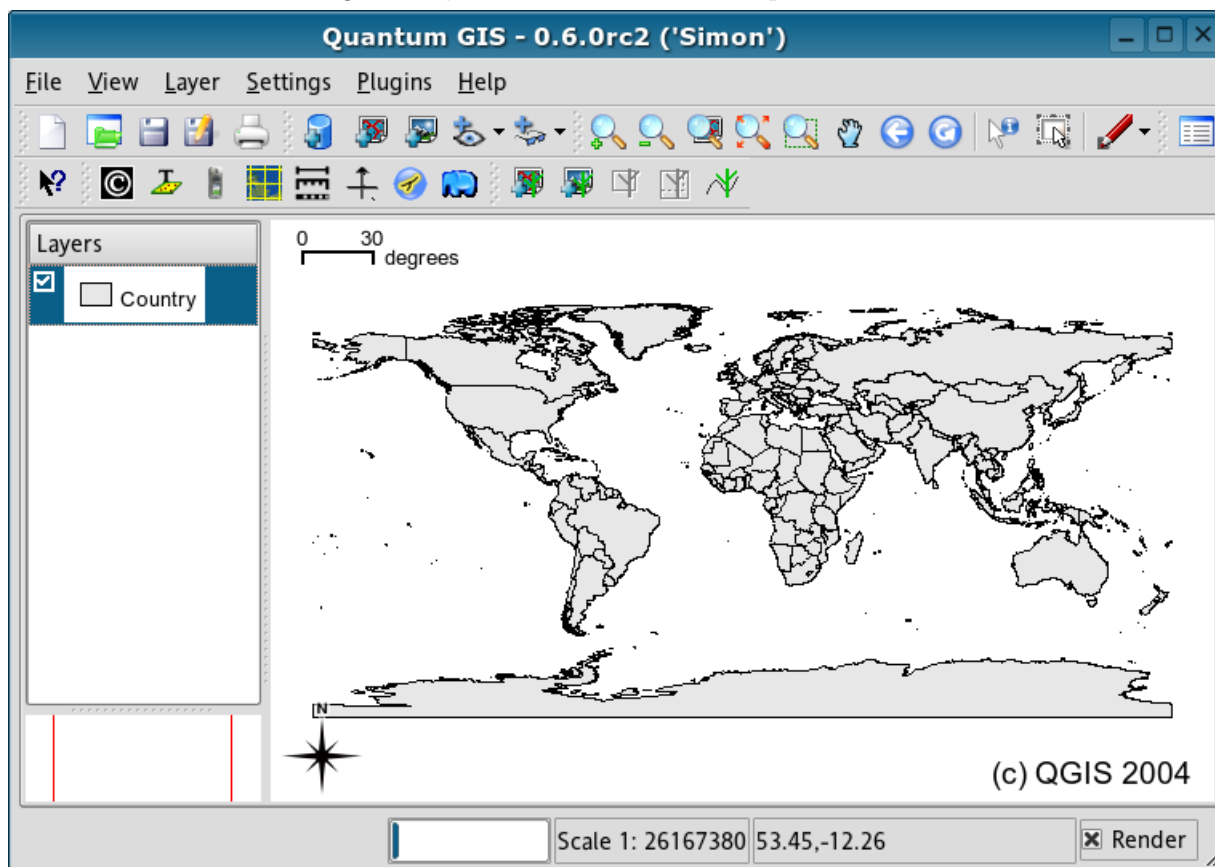
Ok loads it into QGIS. Figure 3 shows QGIS after loading the country.shp file.

Tip 4 LAYER COLORS

When you add a layer to the map, it is assigned a random color. When adding more than one layer at a time, different colors are assigned to each.

Once loaded, you can zoom around the shapefile using the map navigation tools. To change the symbology of a layer, open the layer properties dialog by double clicking on the layer name or by right-clicking on the

Figure 3: QGIS with the countries Shapefile Loaded



name in the legend and choosing *Properties* from the popup menu. See Section 5.3.1 for more information on setting symbology of vector layers.

5.2 PostGIS Layers

PostGIS layers are stored in a PostgreSQL database. The advantage of PostGIS is the spatial indexing, filtering, and query capability. Using PostGIS, vector functions such as select and identify work more accurately than with OGR layers in QGIS. To use PostGIS layers you must:

1. Create a stored connection in QGIS to the PostgreSQL database (if one is not already defined)
2. Connect to the database
3. Select the layer to add to the map
4. Optionally provide a SQL where clause to define which features to load from the layer
5. Load the layer

5.2.1 Creating a Stored Connection



The first time you use a PostGIS data source, you must create a connection to the PostgreSQL database that contains the data. Begin by clicking on the *Add a PostGIS Layer* toolbar button. The *Add PostGIS Table(s)* dialog will be displayed. To access the connection manager, click on the *New*

button to display the *Create a New PostGIS Connection* dialog. The parameters required for a connection are shown in Table 1. Once the parameters have been filled in, you can test the connection by clicking on the

Table 1: PostGIS Connection Parameters

Name	A name for this connection. Can be the same as <i>Database</i>
Host	Name of the database host. This must be a resolvable host name the same as would be used to open a telnet connection or ping the host
Database	Name of the database
Port	Port number the PostgreSQL database server listens on. The default port is 5432.
Username	User name used to login to the database
Password	password used with <i>Username</i> to connect to the database

Test Connection button. To save the password with the connection information, check the *Save Password* option.

Tip 5 QGIS USER SETTINGS AND SECURITY

Your customized settings for QGIS are stored based on the operating system. On Linux/Unix, the settings are stored in your home directory in .qt/qgisrc. On Windows, the settings are stored in the registry. Depending on your computing environment, storing passwords in your QGIS settings may be a security risk.

5.2.2 Loading a PostGIS Layer



Once you have one or more connections defined, you can load layers from the PostgreSQL database.

Of course this requires having data in PostgreSQL. See Section 5.2.3 for a discussion on importing data into the database.

To load a layer from PostGIS, perform the following steps:

1. If the PostGIS layer dialog is not already open, click on the *Add a PostGIS Layer* toolbar button
2. Choose the connection from the drop-down list and click *Connect*
3. Find the layer you wish to add in the list of available layers
4. Select it by clicking on it. You can select multiple layers by holding down the shift key while clicking
5. Click on the *Add* button to add the layer to the map

Tip 6 USING A DEFINITION QUERY WITH POSTGIS LAYERS

If you wish to further define the features added from a PostGIS layer, double-click on the layer to open the SQL editor. Enter a conditional statement to be used to select features from the layer for display. For example, if you have a towns layer with a population field you could select only larger towns by entering *population > 100000*.

5.2.3 Importing Data into PostgreSQL

Data can be imported into PostgreSQL using a number of methods. PostGIS includes a utility called shp2pgsql that can be used to import shapefiles into a PostGIS enabled database.



QGIS comes with a plugin named SPIT (Shapefile to PostGIS Import Tool). SPIT can be used to load multiple shapefiles at one time and includes support for schemas. To use SPIT, open the Plugin Manager from the Tools menu and load the plugin by checking the box next to the SPIT plugin and click

Ok. The SPIT icon will be added to the plugin toolbar.

To import a shapefile, click on the SPIT tool in the toolbar to open the dialog. You can add one or more files to the queue by clicking on the *Add* button. To process the files, click on the *Import* button. The progress of the import as well as any errors/warnings will be displayed as each shapefile is processed.

Tip 7 IMPORTING SHAPEFILES CONTAINING POSTGRESQL RESERVED WORDS

SPIT does not handle importing of shapefiles that contain field names that are reserved words in the PostgreSQL database. This issue will be addressed in a future release of the plugin

5.3 The Vector Properties Dialog

The vector properties dialog provides information about a layer, symbology settings, and labeling options. If your vector layer has been loaded from a PostgreSQL / Postgis datastore, you can also alter the underlying SQL for the layer - either by hand editing the SQL on the 'general' tab, or by invoking the query builder dialog on the 'general' tab. To access the properties dialog, double-click on a layer in the legend or right-click on the layer and select Properties from the popup menu.

5.3.1 Vector Symbology

QGIS supports a number of symbology renderers to control how vector features are displayed. Currently the following renderers are available:

Single symbol - a single style is applied to every object in the layer.

Graduated symbol - objects within the layer are displayed with different symbols classified by the values of a particular field.

Continuous colour - objects within the layer are displayed with a spread of colours classified by the numerical values within a specified field.

Unique value - objects are classified by the unique values within a specified field with each value having a different symbol.

For layers containing point features, additional renderers are available that use SVG icons:

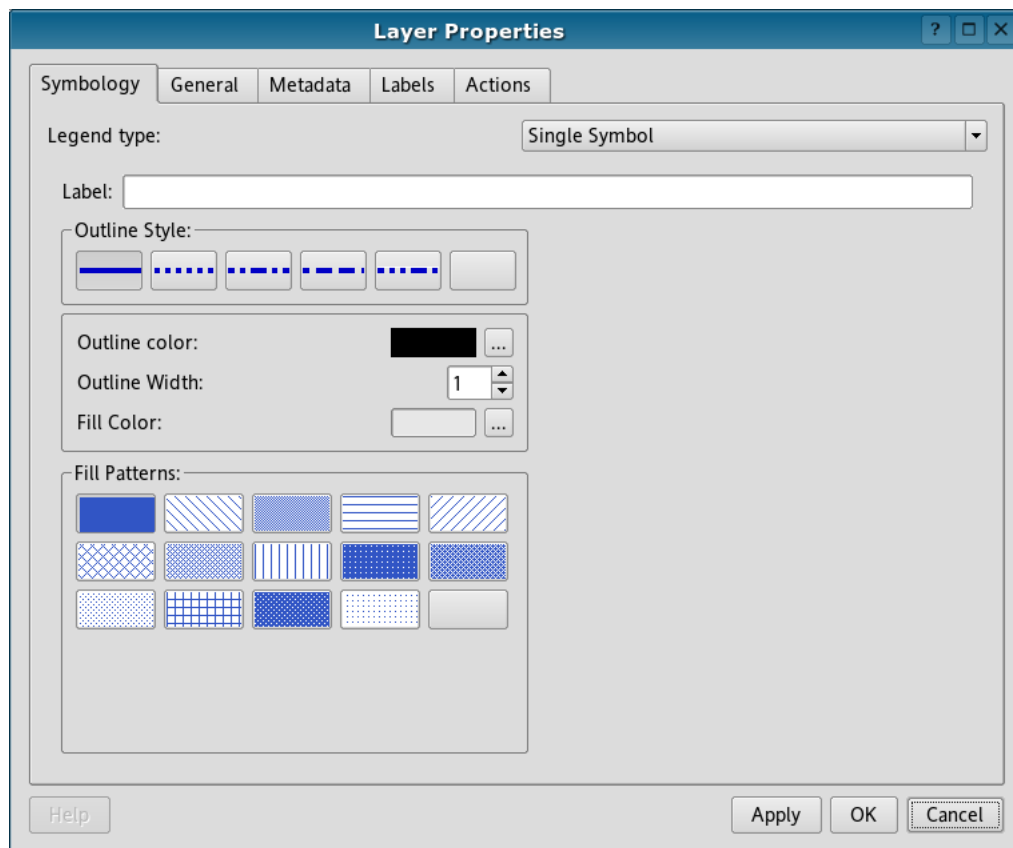
Single marker - a single specified icon is used for every point within the layer.

Graduated marker - points within the layer are displayed with different icons classified by values within a particular field

Unique value marker - points are classified by unique values within a specified field with each value having a different icon.

To change the symbology for a layer, simply double click on its legend entry and the vector layer properties dialog will be shown.

Figure 4: Vector Layer Properties Dialog



6 Working with Raster Data

QGIS supports a number of raster data formats. This section describes how to work with raster data in QGIS.

6.1 What is raster data?

Raster data in GIS are matrices of discrete cells that represent features on, above or below the earth's surface. Each cell in the raster grid is the same size, and cells are usually rectangular (in QGIS they will always be rectangular). Typical raster datasets include remote sensing data such as aerial photography or satellite imagery and modelled data such as an elevation matrix.

Unlike vector data, raster data typically do not have an associated database record for each cell.

In GIS, a raster layer would have georeferencing data associated with it which will allow it to be positioned correctly in the map display to allow other vector and raster data to be overlaid with it. QGIS makes use of georeferenced rasters to properly display the data.

6.2 Raster formats supported in QGIS

QGIS supports a number of different raster formats. Currently tested formats include:

- Arc/Info Binary Grid
- Arc/Info ASCII Grid
- Grass Raster
- GeoTIFF
- Spatial Data Transfer Standard Grids (with some limitations)
- USGS ASCII DEM
- Erdas Imagine

Because the raster implementation in QGIS is based on the GDAL library, other raster formats implemented in GDAL are also likely to work, but have not yet been tested. See [Appendix B](#) for more details.

6.3 Loading raster data in QGIS

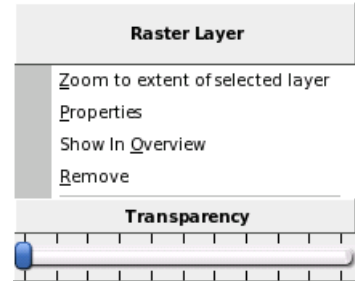


Raster layers are loaded either by clicking on the Load Raster icon or by selecting the View->Add Raster Layer menu option. More than one layer can be loaded at the same time by holding down the Control key and clicking on multiple items in the file dialog.

6.4 Raster Properties

To view and set the properties for a raster layer, right click on the layer name. This displays the raster layer context menu that includes a number of items that allow you to:

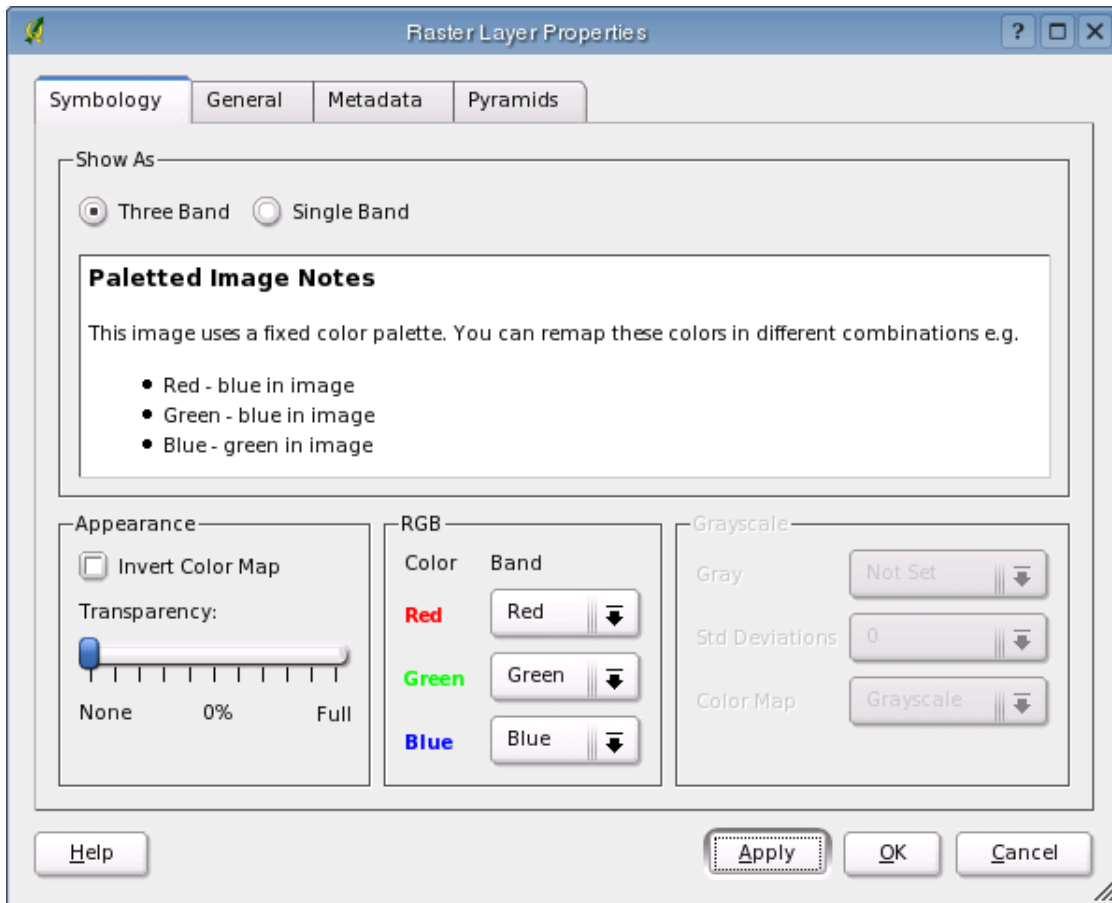
- Zoom to the full extent of the raster
- Show the raster in the map overview window
- Open the properties dialog (of course)
- Remove the layer from the map
- Set the transparency using a slider control



Choose *Properties* from the context menu to open the raster properties dialog for the layer.

Figure 5 shows the properties dialog. There are four tabs on the dialog: *Symbology*, *General*, *Metadata*, and *Pyramids*.

Figure 5: Raster Layers Properties Dialog



6.4.1 Symbology Tab

QGIS supports three forms of raster layers:

- Single Band Grayscale Rasters

- Palette Based RGB Rasters
- Multiband RGB Rasters

From these three basic layer types, eight forms of symbolised raster display can be used:

1. Single Band Grayscale
2. Single Band Pseudocolor
3. Paletted Grayscale (where only the red, green or blue component of the image is displayed)
4. Paletted Pseudocolor (where only the red, green or blue component of the image is displayed, but using a pseudocolor algorithm)
5. Paletted RGB
6. Multiband Grayscale (using only one of the bands to display the image)
7. Multiband Pseudocolor (using only one of the bands shown in pseudocolor)
8. Multiband RGB (using any combination of three bands)

QGIS can invert the colors in a given layer so that light colors become dark (and dark colors become light). Use the *Invert Color Map* checkbox to enable / disable this behavior.

QGIS has the ability to display each raster layer at varying transparency levels. Use the transparency slider to indicate to what extent the underlying layers (if any) should be visible through the current raster layer. The transparency can also be set using the transparency slider in the layer context menu which is accessible by right-clicking on the layer in the legend.

QGIS can restrict the data displayed to only show cells whose values are within a given number of standard deviations of the mean for the layer. This is useful when you have one or two cells with abnormally high values in a raster grid that are having a negative impact on the rendering of the raster. This option is only available for pseudocolor images.

6.4.2 General Tab

The General tab displays basic information about the selected raster, including the layer source and display name in the legend (which can be modified). This tab also shows a thumbnail of the layer, its legend symbol, and the palette.

6.4.3 Metadata Tab

The Metadata tab displays a wealth of information about the raster layer, including statistics about each band in the current raster layer. Statistics are gathered on a 'need to know' basis, so it may well be that a given layers statistics have not yet been collected.

Tip 8 GATHERING RASTER STATISTICS

To gather statistics for a layer, select pseudocolor rendering and click the *Apply* button. Gathering statistics for a layer can be time consuming. Please be patient while QGIS examines your data!

6.4.4 Pyramids Tab

Large resolution raster layers can slow navigation in QGIS. By creating lower resolution copies of the data (pyramids), performance can be considerably improved as QGIS selects the most suitable resolution to use

depending on the level of zoom.

You must have write access in the directory where the original data is stored to build pyramids.

Please note that building pyramids may alter the original data file and once created they cannot be removed. If you wish to preserve a 'non-pyramided' version of your raster, make a backup copy prior to building pyramids.

7 GRASS

The GRASS plugin adds the following features to QGIS:

- Add GRASS vector layers
- Add GRASS raster layers
- Vector layers digitizing
- Changing of the GRASS region

7.1 Starting QGIS with GRASS

When using the GRASS plugin, QGIS can be started in two ways: from the GRASS shell or from a regular shell.

7.1.1 From GRASS shell

If QGIS is started from the GRASS shell (GRASS started by `grass57` command), no additional settings are required.

7.1.2 Outside GRASS shell

If QGIS is not started from the GRASS shell, the environment variables must be properly set before starting QGIS.

The path to GRASS libraries must be added to `LD_LIBRARY_PATH` environment variable. For example (in bash):

```
export LD_LIBRARY_PATH=/usr1/grass57/dist.i686-pc-linux-gnu/lib:$LD_LIBRARY_PATH
```

The `GISBASE` environment variable must be set to the full path of the directory where GRASS is installed (the same as used for `-with-grass=` option). For example (in bash):

```
export GISBASE=/usr1/grass57/dist.i686-pc-linux-gnu
```

7.2 Loading GRASS Data

With the GRASS plugin loaded, you can load a vector or raster layer using the appropriate button on the toolbar.

Tip 9 GRASS DATA LOADING

If you have problems loading data or QGIS terminates abnormally, check to make sure you have started GRASS properly as described in Section 7.1.

7.3 Vector Data Model

It is important to understand the GRASS vector data model prior to digitizing. In general, GRASS uses a topological vector model. This means that areas are not represented as closed polygons, but by one or more boundaries. A boundary between two adjacent areas is digitized only once, and it is shared by both areas. Boundaries must be connected without gaps. An area is identified (labeled) by the centroid of the area.

Besides boundaries and centroids, a vector map can also contain points and lines. All these geometry elements can be mixed in one vector.

It is possible to store more 'layers' in one vector dataset. For example, fields, forests and lakes can be stored in one vector. Adjacent forest and lake can share the same boundary, but they have separate attribute tables. It is also possible to attach attributes to boundaries. For example, the boundary between lake and forest is a road with different attribute table.

The 'layer' of the feature is defined by 'field' (sorry for this name). 'Field' is the number which defines if the geometry is forest or lake. For now, it can be only a number, in the future GRASS will also support names as fields in the user interface.

Attributes are stored in external database tables, for example DBF, PostgreSQL, etc.

Attributes in database tables are linked to geometry elements using 'category'. 'Category' (key, ID) is an integer attached to geometry primitives, and it is used as the link to one column in the database table.

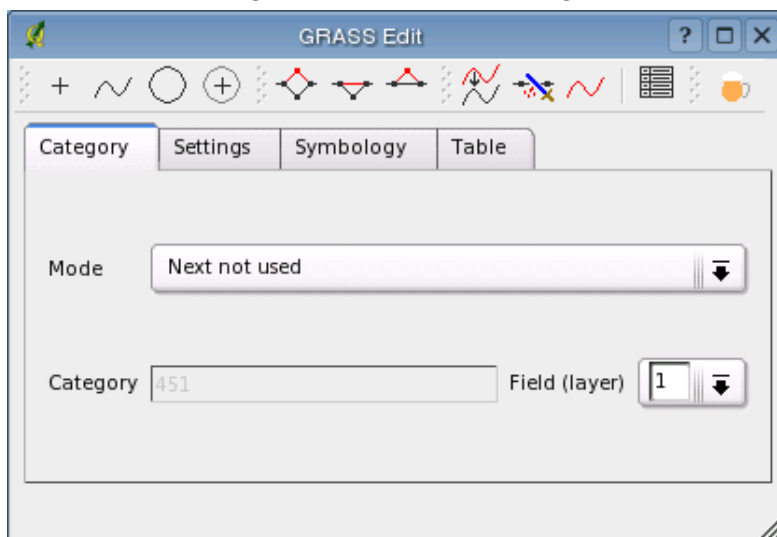
Tip 10 LEARNING THE GRASS VECTOR MODEL

The best way to learn the GRASS vector model and its capabilities is to download the demo mapset from <http://mpa.itc.it/radim/g51/g51test-12-multi.tar.gz>. Extract the mapset, add all layers from vector 'multi' to QGIS, and query attributes. Finally start editing of vector 'multi', to see how those layers are stored.

7.4 Digitizing and Editing Tools

The digitizing tools for GRASS vector layers are accessed using the *Edit GRASS Vector Layer* tool on the toolbar. Make sure you have loaded a GRASS vector and it is the selected layer in the legend before clicking on the edit tool. In this release, the vector must exist prior to beginning to edit. The ability to create a new "empty" layer will be added in a future version. Figure 6 shows the GRASS Edit dialog that is displayed when you click on the edit tool. The tools and settings are discussed in the following sections.

Figure 6: GRASS Edit Dialog



7.4.1 Toolbar

Table 2 lists the digitizing tools provided by the GRASS plugin. These correspond to the tool buttons in the toolbar(s) across the top of the dialog.

Table 2: GRASS Digitizing Tools

Tool	Purpose
New Point	digitize new point
New Line	digitize new line (finish by selecting new tool)
New Boundary	digitize new boundary (finish by selecting new tool)
New Centroid	digitize new centroid (label existing area)
Move vertex	select one vertex of existing line or boundary and identify new position
Add vertex	add a new vertex to existing line
Delete vertex	delete one vertex from existing line (confirm selected vertex by another click)
Move line	select existing line and click on new position
Split line	split an existing line to 2 parts
Delete line	delete existing line (confirm selected line by another click)
Edit attributes	edit attributes of existing element (note that one element can represent more features, see above)
Mug	close digitizing session

7.4.2 Category Tab

This tab allows you to set the way in which the category will be assigned to each new feature and/or assign a category to a feature.

- Mode: what category should be attached to geometry
 - Next not used - next category not yet used in vector
 - Manual entry - define the category in 'Category entry'
 - No category - digitize geometry without category

- Category - a number (ID) attached to digitized feature
- Field - feature (attribute table) identification

7.4.3 Settings Tab

This tab allow you to set the snapping in screen pixels. This is the threshold in pixels in which new points or line ends are snapped to existing nodes. This helps prevent gaps or dangles between boundaries

7.4.4 Symbology Tab

This tab allows you to view and set symbology for various geometry types and their topological status (e.g. closed / opened boundary).

7.4.5 Table

This tab provides the means to view, create, or modify the database table for a given field.

Tip 11 GRASS EDIT PERMISSIONS

You must be the owner of the GRASS mapset you want to edit. It is impossible to edit vectors in mapsets which are not yours, even if you have write permissions.

7.4.6 Region Tool

The current region (window) in GRASS is very important for all raster modules. All new created rasters have the extension and resolution of the current region, regardless their original region. The region is stored in \$LOCATION/\$MAPSET/WIND file, and it defines north, south, east, west, number of columns, number of rows, horizontal and vertical resolution.

It is possible to switch on/off the grass region in QGIS canvas using the *Display Current GRASS Region* button.

With the *Edit Current GRASS Region* you can open a tool in which you can change the current region and symbology of the rectangle on the QGIS Canvas. When the tool is running, it is also possible to select a new region interactively on the QGIS canvas.

Both tools are available only if QGIS was started from a GRASS shell or if the GISRC enviroment variable pointing to a valid GISRC file was set (i.e. only if you are running GRASS within your mapset).

8 Using Plugins

QGIS has been designed with a plugin architecture. This allows new features/functions to be added to the application. Many of the features in QGIS are actually implemented as plugins.

There are two types of plugins in QGIS: core and user-contributed. A core plugin is maintained by the QGIS development team and is part of every QGIS distribtution. A user-contributed plugin is an external plugin

that is maintained by the individual author. The QGIS Community site (<http://community.qgis.org>) serves as the repository for user contributed plugins.

8.1 Finding and Installing a Plugin

When you install QGIS, all of the core plugins are included (these are described below). Additional user-contributed plugins may be available on the QGIS Community site. To see what user-contributed plugins are available, see the plugins page on the Community site (<http://community.qgis.org/plugins>).

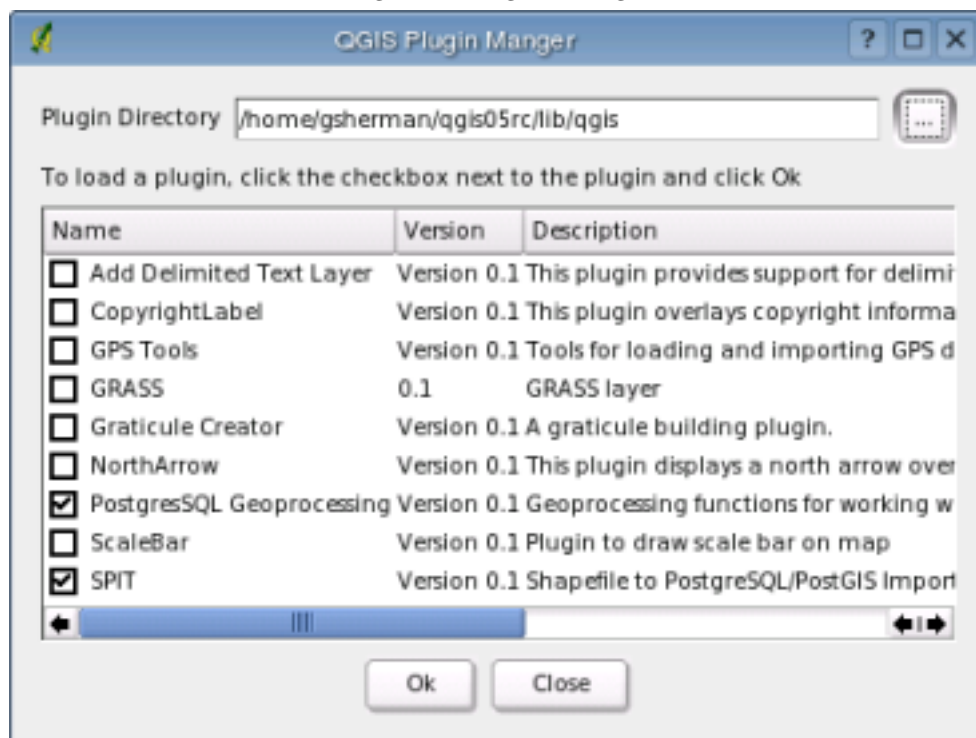
Typically user-contributed plugins are distributed in source form and require compiling. For instructions on building and installing a user-contributed plugin, see the documentation included with the plugin.

8.2 Managing Plugins

Managing plugins consists of loading or unloading them from QGIS. Loaded plugins are "remembered" when you exit the application and restored the next time you run QGIS.

To manage plugins, open the *Plugin Manager* from the *Tools* menu. The Plugin Manager displays all the available plugins and their status (loaded or unloaded). Figure 7 shows the Plugin Manager dialog.

Figure 7: Plugin Manager



Typically all QGIS plugins are installed in the same location. This location is shown in the Plugin Directory text field. You can tell QGIS to load plugins from another location by specifying a different directory.

Tip 12 CRASHING PLUGINS

If you find that QGIS crashes on startup, a plugin may be at fault. You can stop all plugins from loading by editing your `.qt/qgisrc` file in your home directory on Linux/Unix (Windows users will have to edit the registry). On Linux/Unix, open the `qgisrc` file in a text editor and find the [Plugins] section. Set all the plugin values to false to prevent them from loading. For example, to prevent the Delimited text plugin from loading, the entry in `qgisrc` should look like this: **Add Delimited Text Layer=false**. Do this for each plugin in the [Plugins] section. You can then start QGIS and add the plugins one at a time from the Plugin Manger to determine which is causing the problem.

8.3 Data Providers

Data Providers are "special" plugins that provides access to a data store. By default, QGIS supports PostGIS layers and disk-based data stores supported by the OGR library (Appendix A). A Data Provider plugin extends the ability of QGIS to use other data sources.

Data Provider plugins are registered automatically by QGIS at startup. They are not managed by the Plugin Manager but are used behind the scenes when a corresponding data type is added as a layer in QGIS.

8.4 Core Plugins

QGIS currently contains 9 core plugins that can be loaded using the Plugin Manager. Table 3 lists each of the core plugins along with a description of their purpose. Figure 8 shows the icon for each plugin in the Plugin toolbar (the number corresponds to the Item in Table 3. Note the GRASS plugin is not included below because it installs its own toolbar (see Section 7 for a discussion of available features in GRASS plugin).

Table 3: QGIS Core Plugins

Item	Plugin	Description
1	Copyright Label	Display a copyright label on the map canvas
2	Delimited Text	Load a delimited text file containing x,y coordinates as a point layer
3	GPS Tools	Load and display GPS data
4	Graticule Creator	Create a latitude/longitude grid and save as a shapefile
5	Scalebar	Add a scalebar to the map canvas
6	North Arrow	Add a north arrow to the map canvas
7	PostgreSQL Geoprocessing	Buffer a PostGIS layer
8	SPIT	Shapefile to PostGIS Import Tool - import shapefiles into PostgreSQL

Figure 8: Plugin Toolbar and Icons



A Supported OGR Formats

At the data of this document, the following formats are supported by the OGR library.

- Arc/Info Binary Coverage
- Comma Separated Value (.csv)
- DODS/OPeNDAP
- ESRI Shapefile
- FMEObjects Gateway
- GML
- IHO S-57 (ENC)
- Mapinfo File
- Microstation DGN
- OGDII Vectors
- ODBC
- Oracle Spatial
- PostgreSQL¹
- SDTS
- SQLite
- UK .NTF
- U.S. Census TIGER/Line
- VRT - Virtual Datasource

B GDAL Raster Formats

At the date of this document, the following formats are supported by the GDAL library. Note that not all of these format may work in QGIS for various reasons. For example, some require external commercial libraries. Only those formats that have been well tested will appear in the list of file types when loading a raster into QGIS. Other untested formats can be loaded by selecting the *All other files (*)* filter. Formats known to work in QGIS are indicated in **bold**.

- **Arc/Info ASCII Grid**
- **Arc/Info Binary Grid (.adf)**
- Microsoft Windows Device Independent Bitmap (.bmp)
- BSB Nautical Chart Format (.kap)
- VTP Binary Terrain Format (.bt)
- CEOS (Spot for instance)
- First Generation USGS DOQ (.doq)
- New Labelled USGS DOQ (.doq)
- Military Elevation Data (.dt0, .dt1)
- ERMapper Compressed Wavelets (.ecw)
- ESRI .hdr Labelled
- ENVI .hdr Labelled Raster
- Envisat Image Product (.n1)

¹QGIS implements its own PostgreSQL functions. OGR should be built without PostgreSQL support

- EOSAT FAST Format
- FITS (.fits)
- Graphics Interchange Format (.gif)
- **GRASS Rasters²**
- **TIFF / GeoTIFF (.tif)**
- Hierarchical Data Format Release 4 (HDF4)
- **Erdas Imagine (.img)**
- Atlantis MFF2e
- Japanese DEM (.mem)
- **JPEG JFIF (.jpg)**
- JPEG2000 (.jp2, .j2k)
- JPEG2000 (.jp2, .j2k)
- NOAA Polar Orbiter Level 1b Data Set (AVHRR)
- Erdas 7.x .LAN and .GIS
- In Memory Raster
- Atlantis MFF
- Multi-resolution Seamless Image Database MrSID
- NITF
- NetCDF
- OGD Bridge
- PCI .aux Labelled
- PCI Geomatics Database File
- Portable Network Graphics (.png)
- Netpbm (.ppm,.pgm)
- **USGS SDTS DEM (*CATD.DDF)**
- SAR CEOS
- **USGS ASCII DEM (.dem)**
- X11 Pixmap (.xpm)

C Gnu Public License

GNU GENERAL PUBLIC LICENSE

Version 2, June 1991

Copyright (C) 1989, 1991 Free Software Foundation, Inc. 59 Temple Place - Suite 330, Boston, MA 02111-1307, USA

Everyone is permitted to copy and distribute verbatim copies of this license document, but changing it is not allowed.

Preamble

The licenses for most software are designed to take away your freedom to share and change it. By contrast, the GNU General Public License is intended to guarantee your freedom to share and change free software—to make sure the software is free for all its users. This General Public License applies to most of the Free Software Foundation's software and to any other program whose authors commit to using it. (Some other Free Software Foundation software is covered by the GNU Library General Public License instead.) You can apply it to your programs, too.

²GRASS raster support is supplied by the QGIS GRASS data provider plugin

When we speak of free software, we are referring to freedom, not price. Our General Public Licenses are designed to make sure that you have the freedom to distribute copies of free software (and charge for this service if you wish), that you receive source code or can get it if you want it, that you can change the software or use pieces of it in new free programs; and that you know you can do these things.

To protect your rights, we need to make restrictions that forbid anyone to deny you these rights or to ask you to surrender the rights. These restrictions translate to certain responsibilities for you if you distribute copies of the software, or if you modify it.

For example, if you distribute copies of such a program, whether gratis or for a fee, you must give the recipients all the rights that you have. You must make sure that they, too, receive or can get the source code. And you must show them these terms so they know their rights.

We protect your rights with two steps: (1) copyright the software, and (2) offer you this license which gives you legal permission to copy, distribute and/or modify the software.

Also, for each author's protection and ours, we want to make certain that everyone understands that there is no warranty for this free software. If the software is modified by someone else and passed on, we want its recipients to know that what they have is not the original, so that any problems introduced by others will not reflect on the original authors' reputations.

Finally, any free program is threatened constantly by software patents. We wish to avoid the danger that redistributors of a free program will individually obtain patent licenses, in effect making the program proprietary. To prevent this, we have made it clear that any patent must be licensed for everyone's free use or not licensed at all.

The precise terms and conditions for copying, distribution and modification follow. **TERMS AND CONDITIONS FOR COPYING, DISTRIBUTION AND MODIFICATION**

0. This License applies to any program or other work which contains a notice placed by the copyright holder saying it may be distributed under the terms of this General Public License. The "Program", below, refers to any such program or work, and a "work based on the Program" means either the Program or any derivative work under copyright law: that is to say, a work containing the Program or a portion of it, either verbatim or with modifications and/or translated into another language. (Hereinafter, translation is included without limitation in the term "modification".) Each licensee is addressed as "you".

Activities other than copying, distribution and modification are not covered by this License; they are outside its scope. The act of running the Program is not restricted, and the output from the Program is covered only if its contents constitute a work based on the Program (independent of having been made by running the Program). Whether that is true depends on what the Program does.

1. You may copy and distribute verbatim copies of the Program's source code as you receive it, in any medium, provided that you conspicuously and appropriately publish on each copy an appropriate copyright notice and disclaimer of warranty; keep intact all the notices that refer to this License and to the absence of any warranty; and give any other recipients of the Program a copy of this License along with the Program.

You may charge a fee for the physical act of transferring a copy, and you may at your option offer warranty protection in exchange for a fee.

2. You may modify your copy or copies of the Program or any portion of it, thus forming a work based on the Program, and copy and distribute such modifications or work under the terms of Section 1 above, provided that you also meet all of these conditions:

- a) You must cause the modified files to carry prominent notices stating that you changed the files and the date of any change.
- b) You must cause any work that you distribute or publish, that in whole or in part contains or is derived from the Program or any part thereof, to be licensed as a whole at no charge to all third parties under the terms of this License.
- c) If the modified program normally reads commands interactively when run, you must cause it, when started running for such interactive use in the most ordinary way, to print or display an announcement including an appropriate copyright notice and a notice that there is no warranty (or else, saying that you provide a warranty) and that

users may redistribute the program under these conditions, and telling the user how to view a copy of this License. (Exception: if the Program itself is interactive but does not normally print such an announcement, your work based on the Program is not required to print an announcement.)

These requirements apply to the modified work as a whole. If identifiable sections of that work are not derived from the Program, and can be reasonably considered independent and separate works in themselves, then this License, and its terms, do not apply to those sections when you distribute them as separate works. But when you distribute the same sections as part of a whole which is a work based on the Program, the distribution of the whole must be on the terms of this License, whose permissions for other licensees extend to the entire whole, and thus to each and every part regardless of who wrote it.

Thus, it is not the intent of this section to claim rights or contest your rights to work written entirely by you; rather, the intent is to exercise the right to control the distribution of derivative or collective works based on the Program. In addition, mere aggregation of another work not based on the Program with the Program (or with a work based on the Program) on a volume of a storage or distribution medium does not bring the other work under the scope of this License.

3. You may copy and distribute the Program (or a work based on it, under Section 2) in object code or executable form under the terms of Sections 1 and 2 above provided that you also do one of the following:

- a) Accompany it with the complete corresponding machine-readable source code, which must be distributed under the terms of Sections 1 and 2 above on a medium customarily used for software interchange; or,
- b) Accompany it with a written offer, valid for at least three years, to give any third party, for a charge no more than your cost of physically performing source distribution, a complete machine-readable copy of the corresponding source code, to be distributed under the terms of Sections 1 and 2 above on a medium customarily used for software interchange; or,
- c) Accompany it with the information you received as to the offer to distribute corresponding source code. (This alternative is allowed only for noncommercial distribution and only if you received the program in object code or executable form with such an offer, in accord with Subsection b above.)

The source code for a work means the preferred form of the work for making modifications to it. For an executable work, complete source code means all the source code for all modules it contains, plus any associated interface definition files, plus the scripts used to control compilation and installation of the executable. However, as a special exception, the source code distributed need not include anything that is normally distributed (in either source or binary form) with the major components (compiler, kernel, and so on) of the operating system on which the executable runs, unless that component itself accompanies the executable.

If distribution of executable or object code is made by offering access to copy from a designated place, then offering equivalent access to copy the source code from the same place counts as distribution of the source code, even though third parties are not compelled to copy the source along with the object code.

4. You may not copy, modify, sublicense, or distribute the Program except as expressly provided under this License. Any attempt otherwise to copy, modify, sublicense or distribute the Program is void, and will automatically terminate your rights under this License. However, parties who have received copies, or rights, from you under this License will not have their licenses terminated so long as such parties remain in full compliance.

5. You are not required to accept this License, since you have not signed it. However, nothing else grants you permission to modify or distribute the Program or its derivative works. These actions are prohibited by law if you do not accept this License. Therefore, by modifying or distributing the Program (or any work based on the Program), you indicate your acceptance of this License to do so, and all its terms and conditions for copying, distributing or modifying the Program or works based on it.

6. Each time you redistribute the Program (or any work based on the Program), the recipient automatically receives a license from the original licensor to copy, distribute or modify the Program subject to these terms and conditions. You may not impose any further restrictions on the recipients' exercise of the rights granted herein. You are not responsible for enforcing compliance by third parties to this License.

7. If, as a consequence of a court judgment or allegation of patent infringement or for any other reason (not limited to patent issues), conditions are imposed on you (whether by court order, agreement or otherwise) that contradict the conditions of this License, they do not excuse you from the conditions of this License. If you cannot distribute so as to satisfy simultaneously your obligations under this License and any other pertinent obligations, then as a consequence you may not distribute the Program at all. For example, if a patent license would not permit royalty-free redistribution of the Program by all those who receive copies directly or indirectly through you, then the only way you could satisfy both it and this License would be to refrain entirely from distribution of the Program.

If any portion of this section is held invalid or unenforceable under any particular circumstance, the balance of the section is intended to apply and the section as a whole is intended to apply in other circumstances.

It is not the purpose of this section to induce you to infringe any patents or other property right claims or to contest validity of any such claims; this section has the sole purpose of protecting the integrity of the free software distribution system, which is implemented by public license practices. Many people have made generous contributions to the wide range of software distributed through that system in reliance on consistent application of that system; it is up to the author/donor to decide if he or she is willing to distribute software through any other system and a licensee cannot impose that choice.

This section is intended to make thoroughly clear what is believed to be a consequence of the rest of this License.

8. If the distribution and/or use of the Program is restricted in certain countries either by patents or by copyrighted interfaces, the original copyright holder who places the Program under this License may add an explicit geographical distribution limitation excluding those countries, so that distribution is permitted only in or among countries not thus excluded. In such case, this License incorporates the limitation as if written in the body of this License.

9. The Free Software Foundation may publish revised and/or new versions of the General Public License from time to time. Such new versions will be similar in spirit to the present version, but may differ in detail to address new problems or concerns.

Each version is given a distinguishing version number. If the Program specifies a version number of this License which applies to it and "any later version", you have the option of following the terms and conditions either of that version or of any later version published by the Free Software Foundation. If the Program does not specify a version number of this License, you may choose any version ever published by the Free Software Foundation.

10. If you wish to incorporate parts of the Program into other free programs whose distribution conditions are different, write to the author to ask for permission. For software which is copyrighted by the Free Software Foundation, write to the Free Software Foundation; we sometimes make exceptions for this. Our decision will be guided by the two goals of preserving the free status of all derivatives of our free software and of promoting the sharing and reuse of software generally.

NO WARRANTY

11. BECAUSE THE PROGRAM IS LICENSED FREE OF CHARGE, THERE IS NO WARRANTY FOR THE PROGRAM, TO THE EXTENT PERMITTED BY APPLICABLE LAW. EXCEPT WHEN OTHERWISE STATED IN WRITING THE COPYRIGHT HOLDERS AND/OR OTHER PARTIES PROVIDE THE PROGRAM "AS IS" WITHOUT WARRANTY OF ANY KIND, EITHER EXPRESSED OR IMPLIED, INCLUDING, BUT NOT LIMITED TO, THE IMPLIED WARRANTIES OF MERCHANTABILITY AND FITNESS FOR A PARTICULAR PURPOSE. THE ENTIRE RISK AS TO THE QUALITY AND PERFORMANCE OF THE PROGRAM IS WITH YOU. SHOULD THE PROGRAM PROVE DEFECTIVE, YOU ASSUME THE COST OF ALL NECESSARY SERVICING, REPAIR OR CORRECTION.

12. IN NO EVENT UNLESS REQUIRED BY APPLICABLE LAW OR AGREED TO IN WRITING WILL ANY COPYRIGHT HOLDER, OR ANY OTHER PARTY WHO MAY MODIFY AND/OR REDISTRIBUTE THE PROGRAM AS PERMITTED ABOVE, BE LIABLE TO YOU FOR DAMAGES, INCLUDING ANY GENERAL, SPECIAL, INCIDENTAL OR CONSEQUENTIAL DAMAGES ARISING OUT OF THE USE OR INABILITY TO USE THE PROGRAM (INCLUDING BUT NOT LIMITED TO LOSS OF DATA OR DATA BEING RENDERED INACCURATE OR LOSSES SUSTAINED BY YOU OR THIRD PARTIES OR A FAILURE OF THE PROGRAM

TO OPERATE WITH ANY OTHER PROGRAMS), EVEN IF SUCH HOLDER OR OTHER PARTY HAS BEEN ADVISED OF THE POSSIBILITY OF SUCH DAMAGES.

D Quantum GIS Qt exception for GPL

In addition, as a special exception, the QGIS Development Team gives permission to link the code of this program with the Qt library, including but not limited to the following versions (both free and commercial): Qt/Non-commercial Windows, Qt/Windows, Qt/X11, Qt/Mac, and Qt/Embedded (or with modified versions of Qt that use the same license as Qt), and distribute linked combinations including the two. You must obey the GNU General Public License in all respects for all of the code used other than Qt. If you modify this file, you may extend this exception to your version of the file, but you are not obligated to do so. If you do not wish to do so, delete this exception statement from your version.

```
From mcoletti at lychnobite.org Wed Jun 16 12:49:18 2004
Return-Path: <mcoletti at lychnobite.org>
X-Original-To: gsherman at mrcc.com
Delivered-To: gsherman at mrcc.com
Received: from lakermmtao11.cox.net (lakermmtao11.cox.net [68.230.240.28])
by mrcc.com (Postfix) with ESMTP
id E72DE1ED31; Wed, 16 Jun 2004 12:49:36 -0800 (AKDT)
Received: from xanadu.lychnobite.org ([68.101.37.27])
by lakermmtao11.cox.net
(InterMail vM.6.01.03.02 201-2131-111-104-20040324) with ESMTP
id <20040616204920.GTEM25349.lakermmtao11.cox.net at xanadu.lychnobite.org>;
Wed, 16 Jun 2004 16:49:20 -0400
Received: from xanadu.lychnobite.org (localhost.localdomain [127.0.0.1])
by xanadu.lychnobite.org (8.12.8/8.12.8) with ESMTP id i5GKnJF1020545;
Wed, 16 Jun 2004 16:49:19 -0400
Received: from xanadu.lychnobite.org (mcoletti at localhost)
by xanadu.lychnobite.org (8.12.8/8.12.8/Submit) with ESMTP id i5GKnIrt020541;
Wed, 16 Jun 2004 16:49:19 -0400
Message-Id: <200406162049.i5GKnIrt020541 at xanadu.lychnobite.org>
To: sherman at mrcc.com
Cc: gsherman at mrcc.com
Subject: Re: Exception to GPL for Windows
In-Reply-To: Message from sherman at mrcc.com
of "Wed, 16 Jun 2004 11:44:06 -0800." <20040616194406.GA3630 at mrcc.com>
Date: Wed, 16 Jun 2004 16:49:18 -0400
From: Mark Coletti <mcoletti at lychnobite.org>
X-Spam-Checker-Version: SpamAssassin 2.63 (2004-01-11) on tank
X-Spam-Level:
X-Spam-Status: No, hits=0.0 required=5.0 tests=none autolearn=ham version=2.63
X-UIDL: )OL!!25(!c^a"!IMQ"!
Status: R0
X-Status: R
```

X-KMail-EncryptionState: N
X-KMail-SignatureState: N
X-KMail-MDN-Sent:

On Wed, 16 Jun 2004 11:44:06 -0800, sherman at mrcc.com wrote:

> Greetings,
>
> Below is an addition to the QGIS license that will allow linking with any
> version of the Qt library. This change is needed to give us the
> flexibility to compile native versions on Windows, Mac, and embedded
> platforms.
>
> By receiving this email you have been identified as a contributor to the
> QGIS code base and therefore a member of the "QGIS Development Team" as
> referenced in the license change below. Your concurrence is required to
> make this change to the license. Please review the statement below and
> reply to this message indicating you agree with the change. Please
> include the text of this message in your reply.
>
> I would like to have this change implemented prior to the 0.4 release so
> your prompt reply is appreciated.
>
> This change follows guidance found in the GPL FAQ.
>
> Thanks,
> -gary
>
> ---- Addendum to QGIS License ----
> In addition, as a special exception, the QGIS Development Team gives
> permission to link the code of this program with the Qt library,
> including but not limited to the following versions (both free and
> commercial): Qt/Non-commercial Windows, Qt/Windows, Qt/X11, Qt/Mac, and
> Qt/Embedded (or with modified versions of Qt that use the same license
> as Qt), and distribute linked combinations including the two. You must
> obey the GNU General Public License in all respects for all of the code
> used other than Qt. If you modify this file, you may extend this
> exception to your version of the file, but you are not obligated to do
> so. If you do not wish to do so, delete this exception statement from
> your version.

I agree with the change.

--

Mark Coletti | <mailto:mcoletti@lychnobite.org> | <http://www.lychnobite.org/>

Tell Zeno I'm willing to meet him halfway.

From j.obi at troja.net Wed Jun 16 12:14:58 2004
Return-Path: <j.obi at troja.net>
X-Original-To: sherman at mrcc.com
Delivered-To: sherman at mrcc.com
Received: from mail-out03.broadnet-mediascape.de (mail-out03.broadnet-mediascape.de [62.206.1.20])
by mrcc.com (Postfix) with SMTP id 5A3B42CB0
for <sherman at mrcc.com>; Wed, 16 Jun 2004 12:13:50 -0800 (AKDT)
Received: (qmail 6668 invoked by uid 113); 16 Jun 2004 20:13:04 -0000
Received: from j.obi at troja.net by mail-out03 by uid 106 with qmail-scanner-1.20rc3
(trophie: 6.810-1005/905/65140. Clear:RC:1:.
Processed in 0.561462 secs); 16 Jun 2004 20:13:04 -0000
X-Qmail-Scanner-Mail-From: j.obi at troja.net via mail-out03
X-Qmail-Scanner: 1.20rc3 (Clear:RC:1:. Processed in 0.561462 secs)
Received: from d463c54f.datahighways.de (HELO didge.troja.net) (212.99.197.79)
by mail-out03.broadnet-mediascape.de with SMTP; 16 Jun 2004 20:13:03 -0000
Date: Wed, 16 Jun 2004 22:14:58 +0200
From: Jens Oberender <j.obi at troja.net>
To: sherman at mrcc.com
Subject: Re: Exception to GPL for Windows
Message-Id: <20040616221458.010e5378 at didge.troja.net>
In-Reply-To: <20040616194406.GA3630 at mrcc.com>
References: <20040616194406.GA3630 at mrcc.com>
Organization: troja.net
X-Mailer: Sylpheed version 0.9.10claws (GTK+ 1.2.10; i686-suse-linux)
Mime-Version: 1.0
Content-Type: text/plain;
charset=US-ASCII
Content-Transfer-Encoding: 7bit
X-Spam-Checker-Version: SpamAssassin 2.63 (2004-01-11) on tank
X-Spam-Level:
X-Spam-Status: No, hits=-4.9 required=4.0 tests=BAYES_00 autolearn=ham
version=2.63
X-UIDL: P#?"!35)!!Y~h!!'Mh"!
Status: R0
Lines: 41
X-Status: R
X-KMail-EncryptionState: N
X-KMail-SignatureState: N
X-KMail-MDN-Sent:

Hi Gary

I agree!

Ciao,
Jens

```
> Below is an addition to the QGIS license that will allow linking with
> any version of the Qt library. This change is needed to give us the
> flexibility to compile native versions on Windows, Mac, and embedded
> platforms.
>
> By receiving this email you have been identified as a contributor to the
> QGIS code base and therefore a member of the "QGIS Development Team" as
> referenced in the license change below. Your concurrence is required to
> make this change to the license. Please review the statement below and
> reply to this message indicating you agree with the change. Please
> include the text of this message in your reply.
>
> I would like to have this change implemented prior to the 0.4 release so
> your prompt reply is appreciated.
>
> This change follows guidance found in the GPL FAQ.
>
> Thanks,
> -gary
>
> ---- Addendum to QGIS License ----
> In addition, as a special exception, the QGIS Development Team gives
> permission to link the code of this program with the Qt library,
> including but not limited to the following versions (both free and
> commercial): Qt/Non-commercial Windows, Qt/Windows, Qt/X11, Qt/Mac, and
> Qt/Embedded (or with modified versions of Qt that use the same license
> as Qt), and distribute linked combinations including the two. You must
> obey the GNU General Public License in all respects for all of the code
> used other than Qt. If you modify this file, you may extend this
> exception to your version of the file, but you are not obligated to do
> so. If you do not wish to do so, delete this exception statement from
> your version.
>
```

From tim at linfiniti.com Wed Jun 16 12:30:12 2004
Return-Path: <tim at linfiniti.com>
X-Original-To: sherman at mrcc.com
Delivered-To: sherman at mrcc.com
Received: from mta09-svc.ntlworld.com (mta09-svc.ntlworld.com [62.253.162.49])
by mrcc.com (Postfix) with ESMTP id 1FD261ED31
for <sherman at mrcc.com>; Wed, 16 Jun 2004 12:39:01 -0800 (AKDT)
Received: from [192.168.1.101] ([80.6.202.23]) by mta09-svc.ntlworld.com

(InterMail vM.4.01.03.37 201-229-121-137-20020806) with ESMTP
id <20040616203130.UXAS20971.mta09-svc.ntlworld.com at [192.168.1.101]>
for <sherman at mrcc.com>; Wed, 16 Jun 2004 21:31:30 +0100

From: Tim Sutton <tim at linfiniti.com>
Reply-To: tim at linfiniti.com
To: sherman at mrcc.com
Subject: Re: Exception to GPL for Windows
Date: Wed, 16 Jun 2004 21:30:12 +0100
User-Agent: KMail/1.6.2
References: <20040616194406.GA3630 at mrcc.com>
In-Reply-To: <20040616194406.GA3630 at mrcc.com>
MIME-Version: 1.0
Content-Disposition: inline
Content-Type: Text/Plain;
charset="iso-8859-1"
Content-Transfer-Encoding: quoted-printable
Message-Id: <200406162130.21139.tim at linfiniti.com>
X-Spam-Checker-Version: SpamAssassin 2.63 (2004-01-11) on tank
X-Spam-Level:
X-Spam-Status: No, hits=-4.9 required=4.0 tests=BAYES_00 autolearn=ham
version=2.63
X-UIDL: NL'#!OR^"!~bb"!1; at "
Status: R0
Lines: 62
X-Status: R
X-KMail-EncryptionState: N
X-KMail-SignatureState: F
X-KMail-MDN-Sent:

=2D----BEGIN PGP SIGNED MESSAGE-----

Hash: SHA1

Hi

Yes thats fine by me.

Regards

Tim Sutton

On Wednesday 16 June 2004 20:44, you wrote:

> Greetings,

>

> Below is an addition to the QGIS license that will allow linking with any
> version of the Qt library. This change is needed to give us the
> flexibility to compile native versions on Windows, Mac, and embedded
> platforms.

```
>
> By receiving this email you have been identified as a contributor to the
> QGIS code base and therefore a member of the "QGIS Development Team" as
> referenced in the license change below. Your concurrence is required to
> make this change to the license. Please review the statement below and
> reply to this message indicating you agree with the change. Please
> include the text of this message in your reply.
>
> I would like to have this change implemented prior to the 0.4 release so
> your prompt reply is appreciated.
>
> This change follows guidance found in the GPL FAQ.
>
> Thanks,
> -gary
>
> ---- Addendum to QGIS License ----
> In addition, as a special exception, the QGIS Development Team gives
> permission to link the code of this program with the Qt library,
> including but not limited to the following versions (both free and
> commercial): Qt/Non-commercial Windows, Qt/Windows, Qt/X11, Qt/Mac, and
> Qt/Embedded (or with modified versions of Qt that use the same license
> as Qt), and distribute linked combinations including the two. You must
> obey the GNU General Public License in all respects for all of the code
> used other than Qt. If you modify this file, you may extend this
> exception to your version of the file, but you are not obligated to do
> so. If you do not wish to do so, delete this exception statement from
> your version.
```

=2D --=20

The only reason for time is so that everything doesn't happen at once=20

--Albert Einstein=20

Get my public keys from:

<http://tim.suttonfamily.co.uk/modules.php?name=3DContent&pa=3Dshowpage&pid=3D2>

=2D----BEGIN PGP SIGNATURE-----

Version: GnuPG v1.2.4 (GNU/Linux)

iD8DBQFA0K3cWvXTJUo0BDorAs3HAJ9QUcpErktV+nxS9EL1ULKmrelFQQCgrxBW

TP/0/ichXAhfI7U43t5wz0I=3D

=3DzY12

=2D----END PGP SIGNATURE-----

From mcoletti at lychnobite.org Wed Jun 16 12:49:18 2004

Return-Path: <mcoletti at lychnobite.org>
X-Original-To: sherman at mrcc.com
Delivered-To: sherman at mrcc.com
Received: from lakermmtao11.cox.net (lakermmtao11.cox.net [68.230.240.28])
by mrcc.com (Postfix) with ESMTTP
id E72DE1ED31; Wed, 16 Jun 2004 12:49:36 -0800 (AKDT)
Received: from xanadu.lychnobite.org ([68.101.37.27])
by lakermmtao11.cox.net
(InterMail vM.6.01.03.02 201-2131-111-104-20040324) with ESMTTP
id <20040616204920.GTEM25349.lakermmtao11.cox.net at xanadu.lychnobite.org>;
Wed, 16 Jun 2004 16:49:20 -0400
Received: from xanadu.lychnobite.org (localhost.localdomain [127.0.0.1])
by xanadu.lychnobite.org (8.12.8/8.12.8) with ESMTTP id i5GKnJF1020545;
Wed, 16 Jun 2004 16:49:19 -0400
Received: from xanadu.lychnobite.org (mcoletti at localhost)
by xanadu.lychnobite.org (8.12.8/8.12.8/Submit) with ESMTTP id i5GKnIrt020541;
Wed, 16 Jun 2004 16:49:19 -0400
Message-Id: <200406162049.i5GKnIrt020541 at xanadu.lychnobite.org>
To: sherman at mrcc.com
Cc: gsherman at mrcc.com
Subject: Re: Exception to GPL for Windows
In-Reply-To: Message from sherman at mrcc.com
of "Wed, 16 Jun 2004 11:44:06 -0800." <20040616194406.GA3630 at mrcc.com>
Date: Wed, 16 Jun 2004 16:49:18 -0400
From: Mark Coletti <mcoletti at lychnobite.org>
X-Spam-Checker-Version: SpamAssassin 2.63 (2004-01-11) on tank
X-Spam-Level:
X-Spam-Status: No, hits=-4.9 required=4.0 tests=BAYES_00 autolearn=ham
version=2.63
X-UIDL: :ja!!"e-"!cAL"!6Xj"
Status: R0
Lines: 44
X-Status: R
X-KMail-EncryptionState: N
X-KMail-SignatureState: N
X-KMail-MDN-Sent:

On Wed, 16 Jun 2004 11:44:06 -0800, sherman at mrcc.com wrote:

> Greetings,
>
> Below is an addition to the QGIS license that will allow linking with any
> version of the Qt library. This change is needed to give us the
> flexibility to compile native versions on Windows, Mac, and embedded
> platforms.
>
> By receiving this email you have been identified as a contributor to the

> QGIS code base and therefore a member of the "QGIS Development Team" as
> referenced in the license change below. Your concurrence is required to
> make this change to the license. Please review the statement below and
> reply to this message indicating you agree with the change. Please
> include the text of this message in your reply.
>
> I would like to have this change implemented prior to the 0.4 release so
> your prompt reply is appreciated.
>
> This change follows guidance found in the GPL FAQ.
>
> Thanks,
> -gary
>
> ---- Addendum to QGIS License ----
> In addition, as a special exception, the QGIS Development Team gives
> permission to link the code of this program with the Qt library,
> including but not limited to the following versions (both free and
> commercial): Qt/Non-commercial Windows, Qt/Windows, Qt/X11, Qt/Mac, and
> Qt/Embedded (or with modified versions of Qt that use the same license
> as Qt), and distribute linked combinations including the two. You must
> obey the GNU General Public License in all respects for all of the code
> used other than Qt. If you modify this file, you may extend this
> exception to your version of the file, but you are not obligated to do
> so. If you do not wish to do so, delete this exception statement from
> your version.

I agree with the change.

--

Mark Coletti | <mailto:mcoletti@lychnobite.org> | <http://www.lychnobite.org/>
Tell Zeno I'm willing to meet him halfway.

From blazek at itc.it Thu Jun 17 00:33:15 2004
Return-Path: <blazek at itc.it>
X-Original-To: sherman at mrcc.com
Delivered-To: sherman at mrcc.com
Received: from mail.itc.it (unknown [217.77.80.3])
by mrcc.com (Postfix) with ESMTP id E2E201EE46
for <sherman at mrcc.com>; Thu, 17 Jun 2004 00:33:35 -0800 (AKDT)
Received: from ntvir.itc.it ([10.0.20.5])
by mail.itc.it (8.11.6/8.11.6) with SMTP id i5H8XGB06990
for <sherman at mrcc.com>; Thu, 17 Jun 2004 10:33:16 +0200
Received: from orchestra.itc.it ([10.0.10.11])

by ntvir.itc.it (SAVSMTP 3.1.6.45) with SMTP id M2004061710331632569
for <sherman at mrcc.com>; Thu, 17 Jun 2004 10:33:16 +0200
Received: from janacek.itc.it. (janacek [10.40.0.140])
by orchestra.itc.it (8.11.6/8.11.6) with ESMTP id i5H8XF013962
for <sherman at mrcc.com>; Thu, 17 Jun 2004 10:33:16 +0200
Received: from localhost (localhost [[UNIX: localhost]])
by janacek.itc.it. (8.11.6/8.11.2) id i5H8XF223747
for sherman at mrcc.com; Thu, 17 Jun 2004 10:33:15 +0200
Message-Id: <200406170833.i5H8XF223747 at janacek.itc.it.>
Content-Type: text/plain;
 charset="iso-8859-1"
From: Radim Blazek <blazek at itc.it>
To: sherman at mrcc.com
Subject: Re: Exception to GPL for Windows
Date: Thu, 17 Jun 2004 10:33:15 +0200
X-Mailer: KMail [version 1.3.2]
References: <20040616194406.GA3630 at mrcc.com>
In-Reply-To: <20040616194406.GA3630 at mrcc.com>
MIME-Version: 1.0
Content-Transfer-Encoding: 8bit
X-Spam-Checker-Version: SpamAssassin 2.63 (2004-01-11) on tank
X-Spam-Level:
X-Spam-Status: No, hits=-4.9 required=4.0 tests=BAYES_00 autolearn=ham
version=2.63
X-UIDL: 6n="!_NX!!K<+"!9B*!!
Status: RO
Lines: 41
X-Status: U
X-KMail-EncryptionState:
X-KMail-SignatureState:
X-KMail-MDN-Sent:

I fully agree with the change of QGIS license as it is specified below.
I give you permission to apply this change to all my contributions
to QGIS project, I have done so far.

Radim

On Wednesday 16 June 2004 21:44, you wrote:

> Greetings,
>

> Below is an addition to the QGIS license that will allow linking with any
> version of the Qt library. This change is needed to give us the
> flexibility to compile native versions on Windows, Mac, and embedded
> platforms.

>

> By receiving this email you have been identified as a contributor to the

```
> QGIS code base and therefore a member of the "QGIS Development Team" as
> referenced in the license change below. Your concurrence is required to
> make this change to the license. Please review the statement below and
> reply to this message indicating you agree with the change. Please
> include the text of this message in your reply.
>
> I would like to have this change implemented prior to the 0.4 release so
> your prompt reply is appreciated.
>
> This change follows guidance found in the GPL FAQ.
>
> Thanks,
> -gary
>
> ---- Addendum to QGIS License ----
> In addition, as a special exception, the QGIS Development Team gives
> permission to link the code of this program with the Qt library,
> including but not limited to the following versions (both free and
> commercial): Qt/Non-commercial Windows, Qt/Windows, Qt/X11, Qt/Mac, and
> Qt/Embedded (or with modified versions of Qt that use the same license
> as Qt), and distribute linked combinations including the two. You must
> obey the GNU General Public License in all respects for all of the code
> used other than Qt. If you modify this file, you may extend this
> exception to your version of the file, but you are not obligated to do
> so. If you do not wish to do so, delete this exception statement from
> your version.
```

```
From larsl at users.sourceforge.net Fri Jun 18 04:08:22 2004
Return-Path: <larsl at users.sourceforge.net>
X-Original-To: sherman at mrcc.com
Delivered-To: sherman at mrcc.com
Received: from mailfe03.swip.net (mailfe03.swip.net [212.247.154.65])
by mrcc.com (Postfix) with ESMTP id A1F061ECF5
for <sherman at mrcc.com>; Fri, 18 Jun 2004 04:10:46 -0800 (AKDT)
X-T2-Posting-ID: uSiNlGVPT75WaBL3fNIbuw==
Received: from c213-100-50-52.swipnet.se ([213.100.50.52] verified)
by mailfe03.swip.net (CommuniGate Pro SMTP 4.2b5)
with ESMTP id 70251642 for sherman at mrcc.com; Fri, 18 Jun 2004 14:10:26 +0200
Subject: Re: Exception to GPL for Windows
From: Lars Luthman <larsl at users.sourceforge.net>
To: sherman at mrcc.com
In-Reply-To: <20040616194406.GA3630 at mrcc.com>
References: <20040616194406.GA3630 at mrcc.com>
Content-Type: multipart/signed;
    micalg=pgp-sha1;
    protocol="application/pgp-signature";
```

boundary="--vCdaKdKc0XHLvds036MG"
Message-Id: <1087560502.2726.0.camel at gnorf.lars>
Mime-Version: 1.0
X-Mailer: Ximian Evolution 1.4.4-8mdk
Date: Fri, 18 Jun 2004 14:08:22 +0200
X-Spam-Checker-Version: SpamAssassin 2.63 (2004-01-11) on tank
X-Spam-Level:
X-Spam-Status: No, hits=-4.9 required=4.0 tests=BAYES_00 autolearn=ham
version=2.63
X-UIDL: V7;"!R\!M"!15 at !:IW"
Status: R0
Lines: 60
X-Status: U
X-KMail-EncryptionState:
X-KMail-SignatureState:
X-KMail-MDN-Sent:

--vCdaKdKc0XHLvds036MG
Content-Type: text/plain
Content-Transfer-Encoding: quoted-printable

On Wed, 2004-06-16 at 21:44, sherman at mrcc.com wrote:

> Greetings,
>=20
> Below is an addition to the QGIS license that will allow linking with any
> version of the Qt library. This change is needed to give us the
> flexibility to compile native versions on Windows, Mac, and embedded
> platforms.
>=20
> By receiving this email you have been identified as a contributor to the
> QGIS code base and therefore a member of the "QGIS Development Team" as
> referenced in the license change below. Your concurrence is required to
> make this change to the license. Please review the statement below and
> reply to this message indicating you agree with the change. Please
> include the text of this message in your reply.
>=20
> I would like to have this change implemented prior to the 0.4 release so
> your prompt reply is appreciated.
>=20
> This change follows guidance found in the GPL FAQ.
>=20
> Thanks,
> -gary
>=20
> ---- Addendum to QGIS License ----
> In addition, as a special exception, the QGIS Development Team gives

```
> permission to link the code of this program with the Qt library,
> including but not limited to the following versions (both free and
> commercial): Qt/Non-commercial Windows, Qt/Windows, Qt/X11, Qt/Mac, and
> Qt/Embedded (or with modified versions of Qt that use the same license
> as Qt), and distribute linked combinations including the two. You must
> obey the GNU General Public License in all respects for all of the code
> used other than Qt. If you modify this file, you may extend this
> exception to your version of the file, but you are not obligated to do
> so. If you do not wish to do so, delete this exception statement from
> your version.
```

Yes, that's OK with me.

-- Lars Luthman

--=vCdaKdKc0XHLvds036MG

Content-Type: application/pgp-signature; name=signature.asc

Content-Description: This is a digitally signed message part

-----BEGIN PGP SIGNATURE-----

Version: GnuPG v1.2.3 (GNU/Linux)

iD8DBQBA0ts2Q3FGUATHfi4RAu4+AJ44eYQhpfXaUuA14PNi9F9mOQ2MqgCdHFg3

6jxbPbCJKG5FEYIqGEARk10=

=HEzb

-----END PGP SIGNATURE-----

--=vCdaKdKc0XHLvds036MG--

From stevehalasz at yahoo.com Fri Jun 18 06:06:45 2004

Return-Path: <stevehalasz at yahoo.com>

X-Original-To: sherman at mrcc.com

Delivered-To: sherman at mrcc.com

Received: from web41713.mail.yahoo.com (web41713.mail.yahoo.com [66.218.93.130])
by mrcc.com (Postfix) with SMTP id 2FFE01ECF5

for <sherman at mrcc.com>; Fri, 18 Jun 2004 06:07:04 -0800 (AKDT)

Message-ID: <20040618140645.24110.qmail at web41713.mail.yahoo.com>

Received: from [69.165.92.12] by web41713.mail.yahoo.com via HTTP; Fri, 18 Jun 2004 07:06:45 PDT

Date: Fri, 18 Jun 2004 07:06:45 -0700 (PDT)

From: Steve Halasz <stevehalasz at yahoo.com>

Subject: Re: Exception to GPL for Windows

To: sherman at mrcc.com

In-Reply-To: <20040616194406.GA3630 at mrcc.com>

MIME-Version: 1.0

Content-Type: text/plain;
charset=us-ascii
X-Spam-Checker-Version: SpamAssassin 2.63 (2004-01-11) on tank
X-Spam-Level:
X-Spam-Status: No, hits=-4.9 required=4.0 tests=BAYES_00 autolearn=ham
version=2.63
X-UIDL: db'!"M[,"!T6D"!5MT"!
Status: R0
Lines: 74
X-Status: U
X-KMail-EncryptionState:
X-KMail-SignatureState:
X-KMail-MDN-Sent:

Gary,

I agree with this change.

I added a bit of code for autoscrolling the legend during layer drags that I nicked from another gpl project. I have asked for their ok for this change, but have not heard back yet.

Steve Halasz

--- sherman at mrcc.com wrote:
> Greetings,
>
> Below is an addition to the QGIS license that will
> allow linking with any
> version of the Qt library. This change is needed to
> give us the
> flexibility to compile native versions on Windows,
> Mac, and embedded
> platforms.
>
> By receiving this email you have been identified as
> a contributor to the
> QGIS code base and therefore a member of the "QGIS
> Development Team" as
> referenced in the license change below. Your
> concurrence is required to
> make this change to the license. Please review the
> statement below and
> reply to this message indicating you agree with the
> change. Please
> include the text of this message in your reply.

```
>
> I would like to have this change implemented prior
> to the 0.4 release so
> your prompt reply is appreciated.
>
> This change follows guidance found in the GPL FAQ.
>
> Thanks,
> -gary
>
> ---- Addendum to QGIS License ----
> In addition, as a special exception, the QGIS
> Development Team gives
> permission to link the code of this program with the
> Qt library,
> including but not limited to the following versions
> (both free and
> commercial): Qt/Non-commercial Windows, Qt/Windows,
> Qt/X11, Qt/Mac, and
> Qt/Embedded (or with modified versions of Qt that
> use the same license
> as Qt), and distribute linked combinations including
> the two. You must
> obey the GNU General Public License in all respects
> for all of the code
> used other than Qt. If you modify this file, you may
> extend this
> exception to your version of the file, but you are
> not obligated to do
> so. If you do not wish to do so, delete this
> exception statement from
> your version.
>
```

```
-----
Do you Yahoo!?
Yahoo! Mail - You care about security. So do we.
http://promotions.yahoo.com/new\_mail
```